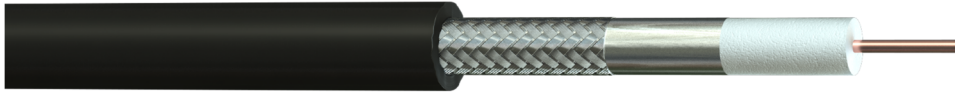


**Part No:** 390L60H-E00  
**Description:** ANT-600 50 Ohm Antennax Low Smoke Halogen Free (LSHF) Black Coaxial Cable



### Construction

Conductor Material : Copper Clad Aluminium  
 Conductor Size : 1/4.47 mm  
 Dielectric : Foam Polyethylene (FPE)  
 Diameter of Dielectric : 11.56 mm  
 1<sup>st</sup> Screen Material : Bonded Aluminium Foil  
 2<sup>nd</sup> Screen Material : Tinned Copper Wire Braid (>90% Coverage)  
 Outer Sheath Material : Low Smoke Halogen Free (LSHF)  
 Outer Sheath Colour : Black



### Electrical Characteristics

Impedance : 50 Ω ± 2  
 Capacitance @ 1 kHz : 76 pF/m ± 5  
 Velocity of Propagation : 85 %  
 Conductor Resistance @ 20°C : ≤ 1.8 Ω /km  
 Screen Resistance @ 20°C : ≤ 5.75 Ω /km  
 Peak Power : 40.0 kW

### Attenuation @ 20°C

Frequency (MHz)	Attenuation (dB/100ft)	Attenuation (dB/100m)	Frequency (MHz)	Attenuation (dB/100ft)	Attenuation (dB/100m)
30	0.5	1.6	1500	3.3	10.8
50	0.6	2.0	1800	3.7	12.0
150	1.0	3.2	2000	3.9	12.7
220	1.2	3.8	2500	4.4	14.5
450	1.7	5.6	5800	7.2	23.6
900	2.5	8.2			

### Return Loss @ 20°C

Frequency (MHz)	Return Loss (dB)
30-3000MHz	≥ 15

### Physical Characteristics

Overall Diameter : 15.0 mm (±0.20mm)  
 Bending Radius : 5 x OD  
 Temperature Rating : -40°C to +75°C  
 Weight : 200 kg/km

### Standards

Flame Retardant : BS EN 60332-1-2, BS EN 60332-3-24 Cat C  
 Low Smoke Generation : BS EN 61034-2  
 Halogen Gas Emission : BS EN 60754-1&2  
 RoHS3 Compliant : Yes  
 UV & Weather Resistant : ISO 4892-3  
 CE Compliant : CPR (305/2011)  
 CPR Classification : Eca (EN50575:2014+A1:2016)