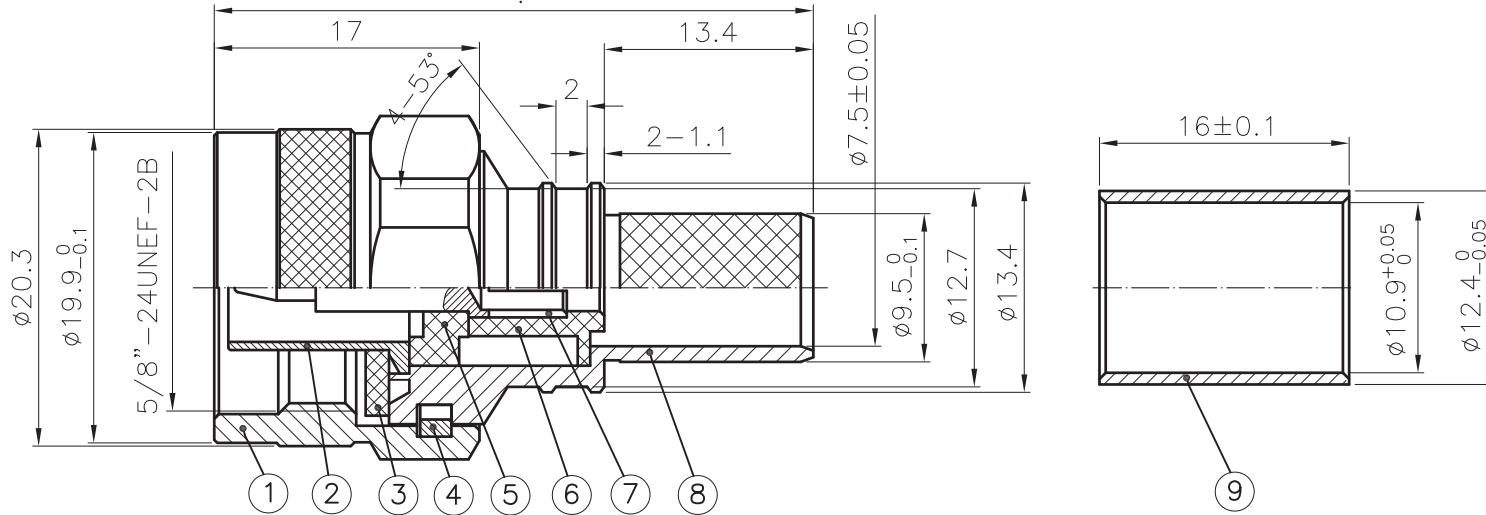


# Part Reference: 390L40-EZCN1

REV.	DATE	DESCRIPTION
A	2014.11.20	

4: CRIMPED FERRULE  
 HEX. CRIMP SIZE 0.429"  
 CONTACT PIN SOLDERLESS



## 1. ELECTRICAL :

- 1.1. Nominal Impedance : 50Ω ;
- 1.2. Frequency range : 0~6GHz ;
- 1.3. VSWR : ≤1.25 ;
- 1.4. Contact Resistance :  
 Center Contact : ≤0.8mΩ ;  
 Outer Contact : ≤0.2mΩ ;
- 1.5. Dielectric Voltage : 1500Vrms ;
- 1.6. Insulation Resistance : ≥5000MΩ ;
- 1.7. Insertion loss:0.1dB(DC-3GHz);

## 2. Mechanical :

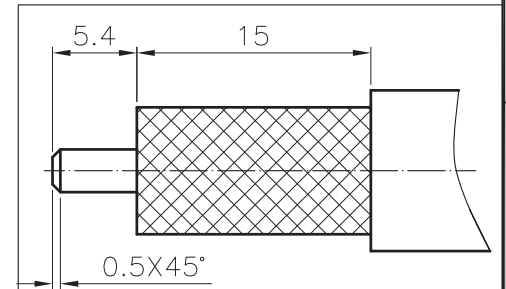
- 2.1. Interface Dimensions:IEC60169-16 ;
- 2.2. Durability : 500cycles min ;

## 3. Environmental :

- 3.1. Operating Temp. Range:-40℃~+80℃ ;

## 4. Material and plating :

BODY&OUTR CONTACT : BRASS, NICKEL PLATING ;  
 COUPLING NUT : BRASS, NICKEL PLATING ;  
 CENTER CONTACT : BRONZE, GOLD PLATING ;  
 INSULATOR : PTFE ;  
 FERRULE : SOFT BRASS, NICKEL PLATING ;  
 GASKET : SILICONE RUBBER  
 RING : BRONZE



REV.	A	SCALE	2/1	PART NO.	
PROJECTION				APPROVED	DATE
TITLE N MALE SOLDERLESS CONTACT PLUG FOR LMR400 CABLE				CHECKED	DATE
DRAWING NO.				DRAWN	DATE
UNLESS OTHERWISE SPECIFIED TOLERANCES TOLERANCES 1. * ±0.2      4 T.I.R 0.1 2. ** ±0.1    5. SURFACE ROUGHNESS Ra1.6 3. ANGLE ±3°   6. EDGES CO.15 MAX. * MAJOR DIMENSION					