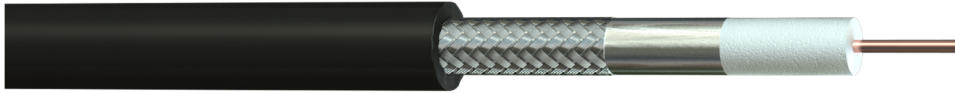


Part No: 390L30-F00
Description: ANT-300 50 Ohm Antennax Polyethylene (PE) Black Coaxial Cable



Construction

Conductor Material : Solid Bare Copper
 Conductor Size : 1/1.78 mm
 Dielectric : Foam Polyethylene (FPE)
 Diameter of Dielectric : 4.83 mm
 1st Screen Material : Bonded Aluminium Foil
 2nd Screen Material : Tinned Copper Wire Braid (>87% Coverage)
 Outer Sheath Material : Polyethylene (PE)
 Outer Sheath Colour : Black



Electrical Characteristics

Impedance : 50 Ω ± 2
 Capacitance @ 1 kHz : 80 pF/m ± 5
 Velocity of Propagation : 83 %
 Conductor Resistance @ 20°C : ≤ 6.96 Ω /km
 Screen Resistance @ 20°C : ≤ 8.5 Ω /km
 Peak Power : 10.0 kW

Attenuation @ 20°C

Frequency (MHz)	Attenuation (dB/100ft)	Attenuation (dB/100m)	Frequency (MHz)	Attenuation (dB/100ft)	Attenuation (dB/100m)
30	1.2	3.8	1500	7.8	25.7
50	1.4	4.7	1800	8.6	28.3
150	2.3	7.6	2000	9.1	30.0
220	2.8	9.2	2500	10.3	33.8
450	4.1	13.5	5800	16.6	54.3
900	6.0	19.6			

Return Loss @ 20°C

Frequency (MHz)	Return Loss (dB)
30-3000MHz	≥ 15

Physical Characteristics

Overall Diameter : 7.6 mm (±0.15mm)
 Bending Radius : 5 x OD
 Temperature Rating : -40°C to +75°C
 Weight : 80 kg/km

Standards

RoHS3 Compliant : Yes
 UV & Weather Resistant : ISO 4892-3
 CE Compliant : CPR (305/2011)
 CPR Classification : Fca (EN50575:2014+A1:2016)