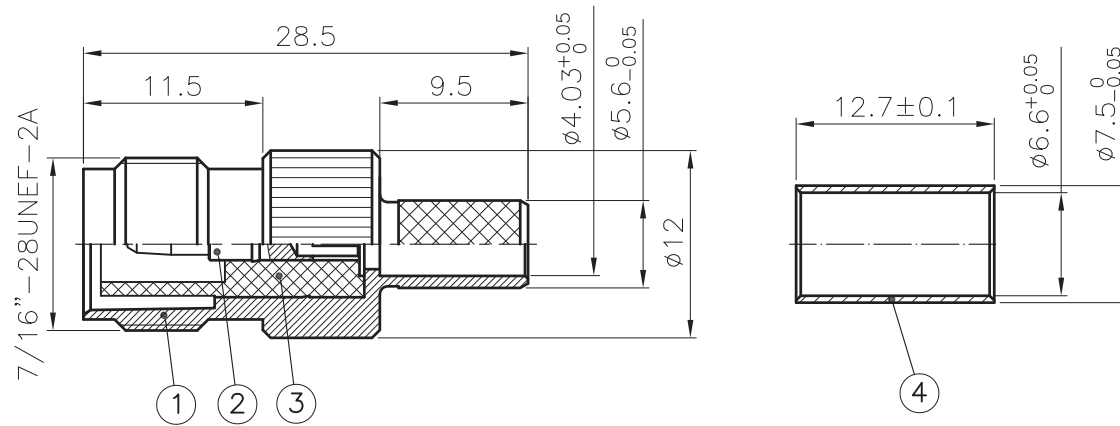


Part Reference: 390L24-EZCT7

| REV. | DATE | DESCRIPTION |
|------|------------|-------------|
| A | 2014.11.25 | |

- 1. CRIMPED FERRULE
HEX. CRIMP SIZE 0.255"
- 2. CONTACT PIN SOLDERLESS



1. ELECTRICAL :

- 1.1. Nominal Impedance : 50Ω ;
- 1.2. Frequency range : 0~3GHz ;
- 1.3. VSWR : ≤ 1.25 ;
- 1.4. Contact Resistance :
Center Contact : $\leq 3 \text{ m}\Omega$;
Outer Contact : $\leq 2 \text{ m}\Omega$;
- 1.5. Dielectric Voltage : 750Vrms ;
- 1.6. Insulation Resistance : $\geq 5000 \text{ M}\Omega$;
- 1.7. Insertion loss: According as the cable ;

2. Mechanical :

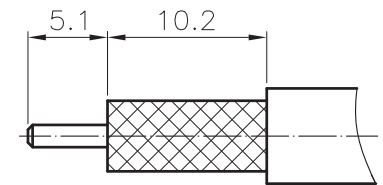
- 2.1. Interface Dimensions: IEC60169-17 ;
- 2.2. Durability : 500cycles min ;

3. Environmental :

- 3.1. Operating Temp. Range: -40°C - $+80^{\circ}\text{C}$;

4. Material and plating :

- BODY : BRASS, NICKEL PLATING ;
- CENTER CONTACT : BRONZE, GOLD PLATING ;
- INSULATOR : PTFE ;
- FERRULE : SOFT BRASS, NICKEL PLATING ;



| | | | | | | |
|---|---|---|-------|----------|----------|--|
| TITLE RPTNC FEMALE SOLDERLESS CONTACT JACK FOR LMR240 CABLE | REV. | A | SCALE | 2/1 | PART NO. | |
| | PROJECTION | | | APPROVED | | |
| DRAWING NO. | UNLESS OTHERWISE SPECIFIED TOLERANCES TOLERANCES 1. * ± 0.2 4 T.I.R 0.1 2. ** ± 0.1 5. SURFACE ROUGHNESS Ra1.6 3. ANGLE $\pm 3^{\circ}$ 6. EDGES CO.15 MAX. | | | | CHECKED | |
| | * MAJOR DIMENSION | | | | DRAWN | |
| | | | | DATE | | |
| | | | | DATE | | |