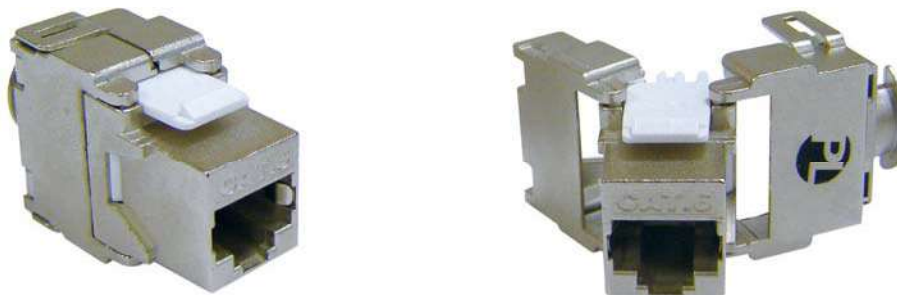


**FEATURES:**

- Conform to TIA/EIA-568.2-D, ISO/IEC 11801-1 and EN50173-1 specifications
- Die-casting design for optimal EMI protection
- Supports T568 A&B wiring & easy installation
- Toolless design allows all 4 pairs to be mass terminated with a pair of channel locks
- Compact design ideal for high density applications
- RoHS compliant



**APPLICATIONS:**

- 1000Base-TX, 1000Base-T, 100Base-TX,
- ATM-25, ATM-51, ATM-155
- 100VG-AnyLan
- TR-4, TR-16 Active, TR16 Passive

**CHARACTERISTICS:**

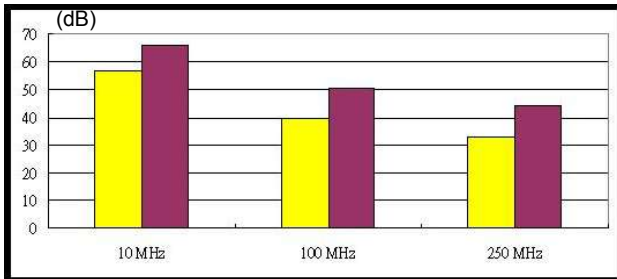
Dielectric Strength	1000V RMS for 1min
Current Rating	1.5Amp Max.
Insulation Resistance	10MΩ Min.
Contact Resistance	2mΩ per contact
Temperature Range	-10° to 60°
Humidity	10%~90%; non condensing
Admissible Conductor	22AWG ~ 26AWG insulation wire
Body Material	Housing: PC, UL94 V-0 Body: zinc die-casting
Jack contact	phosphor bronze, 50μ inch gold plated over nickel Operating life: minimum 750 insertions
IDC Contacts	100μ inch nickel plated over phosphor bronze Operating life: minimum 250 Re-terminations

*Premium Line Systems GmbH reserves the right to change specifications without prior notice.*

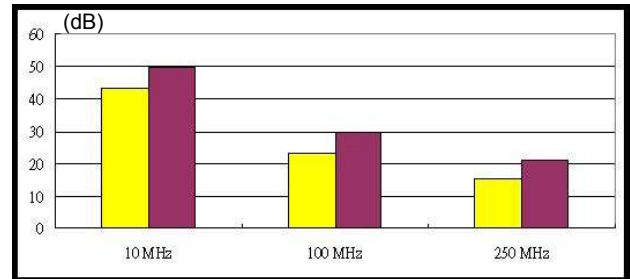
**TYPICAL PERFORMANCE:**

**Channel Performance Data for Cat.6 Shielded Solution**

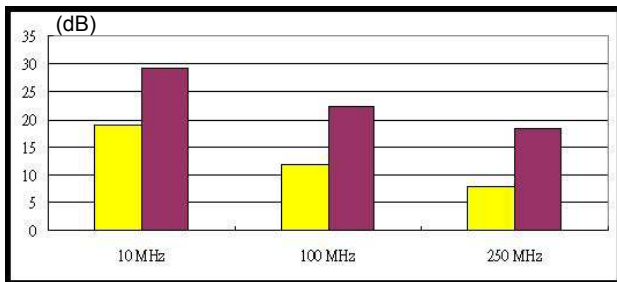
**NEXT**



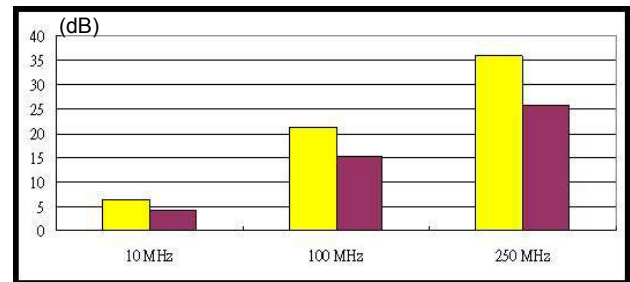
**ELFEXT**



**Return Loss**

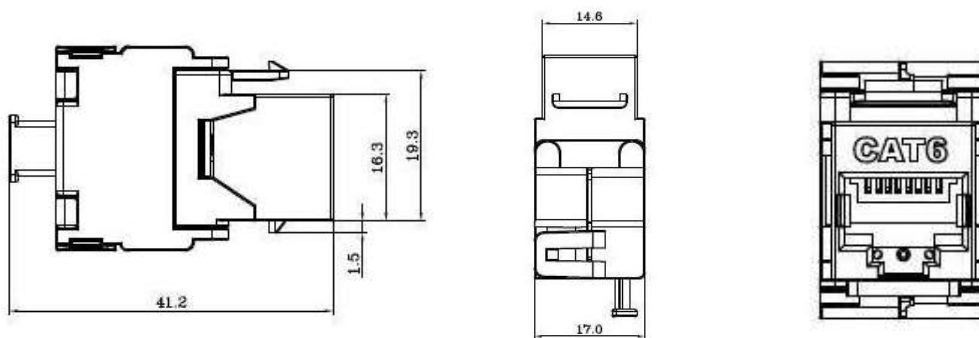


**Insertion Loss**



Cat.6 Limit
  Typical

**DRAWING:**



**ORDERING INFORMATION:**

Part NO. 106524010  
 Description Cat.6 180° shielded die-casting keystone jack  
 Packing 1pc/PE bag, 50pcs/box, 10box/carton  
 carton size : 42\*41\*38 cm weight: N.W. 18 KG G.W. 20 KG

**Premium-Line Systems GmbH, Rosenheimer Str.89, D-83064 Raubling, Germany**

► **TEL: +49(0)8035 9836 0** ► **Fax: +49(0)8035 9836 22**

*Premium Line Systems GmbH reserves the right to change specifications without prior notice.*