

FEATURES:

- Performance conform to TIA/EIA-568.2-D, ISO/IEC 11801-1 and EN50173-1 category 6 specifications
- Fully shielded design optimizes shield effectiveness protection from EMI
- Supports T568 A&B wiring & easy installation
- Dual IDC connector can accept 22-26 AWG solid cables.
- Terminate using 110 or Krone tools
- ETL Verified
- RoHS compliant



APPLICATION:

- 1000BASE-TX Gigabit Ethernet
- 1000BASE-T Gigabit Ethernet
- 100BASE-TX Fast Ethernet
- 10BASE-T Ethernet
- Voice, Video and other applications

Premium Line Systems GmbH reserves the right to change specifications without prior notice.

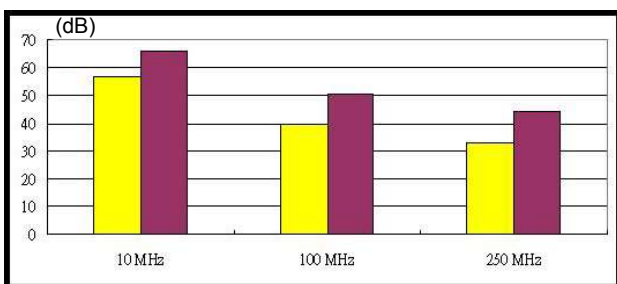
CHARACTERISTICS:

Dielectric Strength	1000V RMS for 1min
Current Rating	1.5Amp Max.
Insulation Resistance	10MΩ Min.
Contact Resistance	2mΩ per contact
Temperature Range	-10° to 60° C
Humidity	10%~90%; non condensing
Material Flame Rating	UL94 V-0
Admissible Conductor	22AWG ~ 26AWG insulation wire
8pin contact in PCB Jack	Phosphor bronze, 50μ inch gold plating over nickel in contact area
IDC Contacts	Operating life: Minimum 750 insertions 100μ inch nickel plated over phosphor bronze
Shielded Cover	Operating life: Minimum 250 Re-terminations 50~60μ inch nickel plated over phosphor bronze

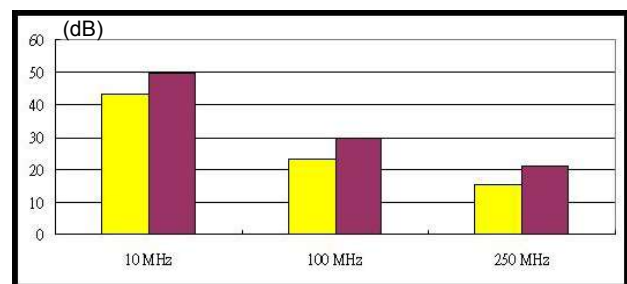
TYPICAL PERFORMANCE:

Channel Performance Data for Cat.6 Shielded Solution

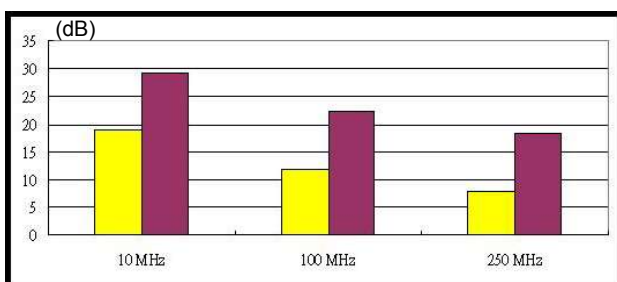
NEXT



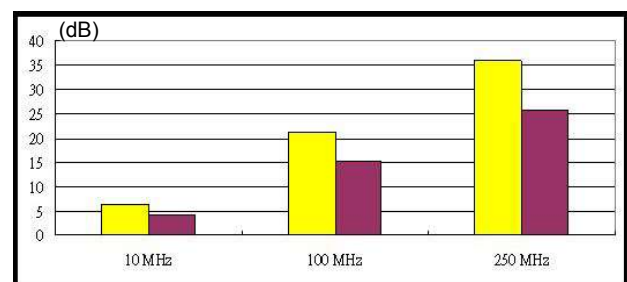
ELFEXT



Return Loss



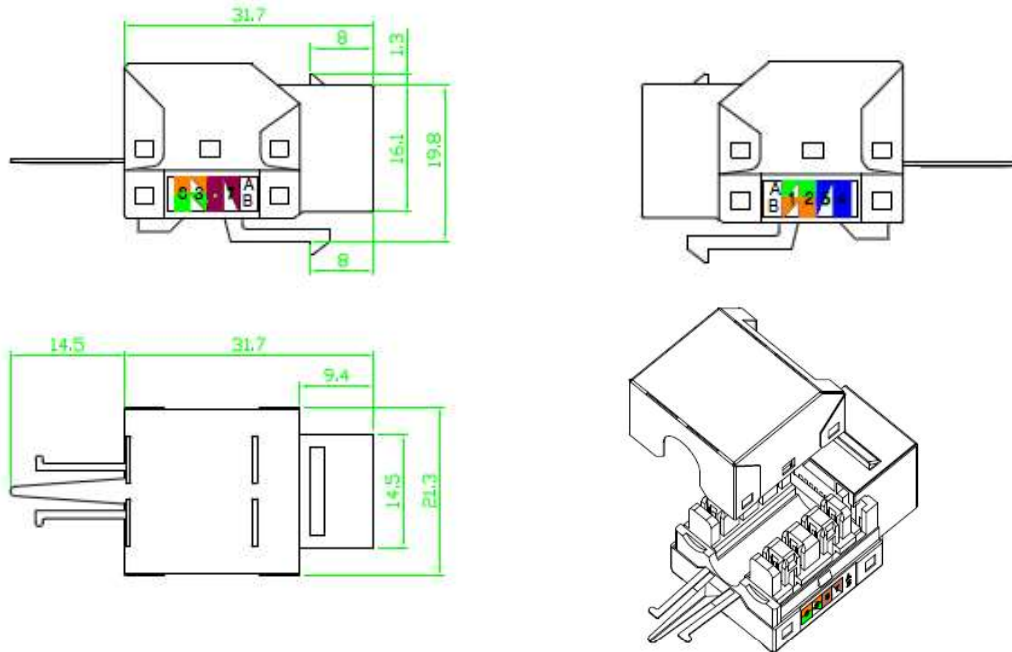
Insertion Loss



Legend: █ Cat.6 Limit █ Typical

Premium Line Systems GmbH reserves the right to change specifications without prior notice.

DRAWING:



ORDERING INFORMATION:

Part NO.	106211010
Description	Cat.6 90° shielded keystone jack, dual type IDC
Packing	1pc/ PE bag, 40pcs/ box, 400 pcs/carton carton size 53.8*35.2*27 cm weight N.W. 6.4KG G.W.10.9KG

Premium-Line Systems GmbH, Rosenheimer Str.89, D-83064 Raubling Germany

► TEL: + 49(0)8035 9836 0 ► Fax: + 49(0)8035 9836 22

Premium Line Systems GmbH reserves the right to change specifications without prior notice.